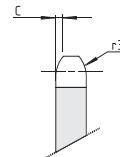
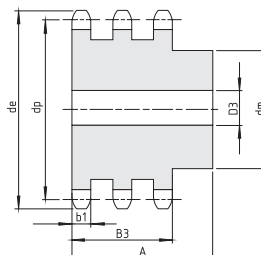
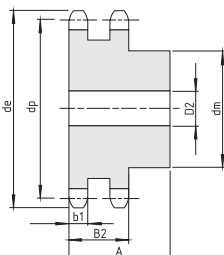
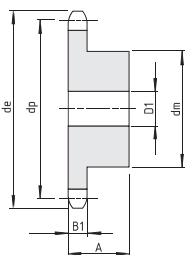


# Koła łańcuchowe z piastą

# 3/8" x 7/32"



Łańcuch 3/8" x 7/32"

Podziątka	Rollka	Szerokość wew.	C	r3	B1	B2	B3
9,525	6,35	5,72	1	10	5,3	15,4	25,6

1 rzędowe (simplex)  
06B-1

2 rzędowe (duplex)  
06B-2

3 rzędowe (triplex)  
06B-3

Z	De	Dp	KOD	dm	D1	A	KOD	dm	D2	A	KOD	dm	D3	A
8	28,0	24,89	DP0138	15	8	22	DP0202	15	6	22	DP0250	15	6	32
9	31,0	27,85	DP0139	18	8	22	DP0203	18	8	22	DP0251	18	8	32
10	34,0	30,82	DP0140	20	8	22	DP0204	20	8	22	DP0252	20	10	32
11	37,0	33,80	DP0141	22	8	25	DP0205	22	10	25	DP0253	22	10	35
12	40,0	36,80	DP0142	25	8	25	DP0206	25	10	25	DP0254	25	10	35
13	43,0	39,80	DP0143	28	10	25	DP0207	28	10	25	DP0255	28	10	35
14	46,3	42,80	DP0144	31	10	25	DP0208	31	10	25	DP0256	31	12	35
15	49,3	45,81	DP0145	34	10	25	DP0209	34	10	25	DP0257	34	12	35
16	52,3	48,82	DP0146	37	10	28	DP0210	37	12	30	DP0258	37	12	35
17	55,3	51,83	DP0147	40	10	28	DP0211	40	12	30	DP0259	40	12	35
18	58,3	54,85	DP0148	43	10	28	DP0212	43	12	30	DP0260	43	12	35
19	61,3	57,87	DP0149	45	10	28	DP0213	46	12	30	DP0261	46	12	35
20	64,3	60,89	DP0150	46	10	28	DP0214	49	12	30	DP0262	49	12	35
21	68,0	63,91	DP0151	48	12	28	DP0215	52	12	30	DP0263	52	14	40
22	71,0	66,93	DP0152	50	12	28	DP0216	55	12	30	DP0264	55	14	40
23	73,5	69,95	DP0153	52	12	28	DP0217	58	12	30	DP0265	58	14	40
24	77,0	72,97	DP0154	54	12	28	DP0218	61	12	30	DP0266	61	14	40
25	80,0	76,00	DP0155	57	12	28	DP0219	64	12	30	DP0267	64	14	40
26	83,0	79,02	DP0156	60	12	28	DP0220	67	12	30	DP0268	67	14	40
27	86,0	82,04	DP0157	60	12	28	DP0221	70	12	30	DP0269	70	14	40
28	89,0	85,07	DP0158	60	12	28	DP0222	73	12	30	DP0270	73	14	40
29	92,0	88,09	DP0159	60	12	28	DP0223	76	12	30	DP0271	76	14	40
30	94,7	91,12	DP0160	60	12	30	DP0224	79	12	30	DP0272	79	14	40
31	98,3	94,15	DP0161	65	14	30	DP0225	80	16	30	DP0273	80	16	40
32	101,3	97,17	DP0162	65	14	30	DP0226	80	16	30	DP0274	80	16	40
33	104,3	100,20	DP0163	65	14	30	DP0227	80	16	30	DP0275	80	16	40
34	107,3	103,23	DP0164	65	14	30	DP0228	80	16	30	DP0276	85	16	40
35	110,4	106,26	DP0165	65	14	30	DP0229	80	16	30	DP0277	85	16	40
36	113,4	109,29	DP0166	70	16	30	DP0230	90	16	30	DP0278	90	16	40
37	116,4	112,32	DP0167	70	16	30	DP0231	90	16	30	DP0279	90	16	40
38	119,5	115,34	DP0168	70	16	30	DP0232	90	16	30	DP0280	90	16	40
39	122,5	118,37	DP0169	70	16	30	DP0233	90	16	30	DP0281	90	16	40
40	125,5	121,40	DP0170	70	16	30	DP0234	90	16	30	DP0282	90	16	40
41	128,5	124,43	DP0171	78*	16	35	DP0235	88*	20	50	-	-	-	-
42	131,6	127,46	DP0172	78*	16	35	DP0236	88*	20	50	-	-	-	-
43	134,6	130,49	DP0173	78*	16	35	DP0237	88*	20	50	-	-	-	-
44	137,6	133,52	DP0174	78*	16	35	DP0238	88*	20	50	-	-	-	-
45	140,7	136,54	DP0175	78*	16	35	DP0239	88*	20	50	DP0283	88*	20	60
46	143,7	139,58	DP0176	78*	16	35	-	-	-	-	-	-	-	-
47	146,7	142,62	-	-	-	-	DP0240	88*	20	50	-	-	-	-
48	149,7	145,64	DP0177	78*	16	35	DP0241	88*	20	50	-	-	-	-
49	152,7	148,66	DP0178	78*	20	35	DP0242	88*	20	50	-	-	-	-
50	155,7	151,69	DP0179	78*	20	35	DP0243	88*	20	50	DP0284	88*	20	60
51	158,7	154,72	DP0180	78*	20	35	DP0244	88*	20	50	-	-	-	-
52	161,8	157,75	-	-	-	-	DP0245	88*	20	50	-	-	-	-
53	164,8	160,78	DP0181	78*	20	35	-	-	-	-	-	-	-	-
54	167,8	163,82	DP0182	78*	20	35	DP0241	88*	20	50	-	-	-	-
55	170,8	166,85	DP0183	78*	20	35	DP0242	88*	20	50	-	-	-	-
56	173,8	169,88	DP0184	78*	20	35	DP0243	88*	20	50	-	-	-	-
57	176,9	172,91	DP0185	78*	20	35	DP0244	88*	20	50	DP0285	88*	25	60
58	179,9	175,93	DP0186	78*	20	35	-	-	-	-	-	-	-	-
60	186,0	181,99	DP0187	78*	20	35	DP0245	88*	20	50	DP0286	88*	25	60
61	189,0	185,02	DP0188	78*	20	35	-	-	-	-	-	-	-	-
62	192,1	188,06	DP0189	78*	20	35	-	-	-	-	-	-	-	-
63	195,2	191,13	DP0190	78*	20	35	-	-	-	-	-	-	-	-
64	198,2	194,12	DP0191	78*	20	35	-	-	-	-	-	-	-	-
65	201,6	197,15	DP0192	78*	20	35	DP0246	88*	25	50	-	-	-	-
68	210,7	206,24	DP0193	78*	20	35	-	-	-	-	-	-	-	-
76	234,9	230,49	DP0194	78*	20	35	DP0247	88*	25	50	DP0287	88*	25	60
85	262,2	257,77	DP0195	78*	20	35	-	-	-	-	-	-	-	-
90	277,4	272,93	DP0196	78*	20	35	-	-	-	-	-	-	-	-
95	292,5	288,08	DP0197	88*	25	40	DP0248	108*	25	50	DP0288	120*	25	60
100	307,7	303,25	DP0198	88*	25	40	-	-	-	-	-	-	-	-
114	349,5	345,68	DP0199	88*	25	40	DP0249	108*	25	50	-	-	-	-
120	368,3	363,86	DP0200	88*	25	40	-	-	-	-	-	-	-	-
125	383,5	379,02	DP0201	88*	25	40	-	-	-	-	-	-	-	-